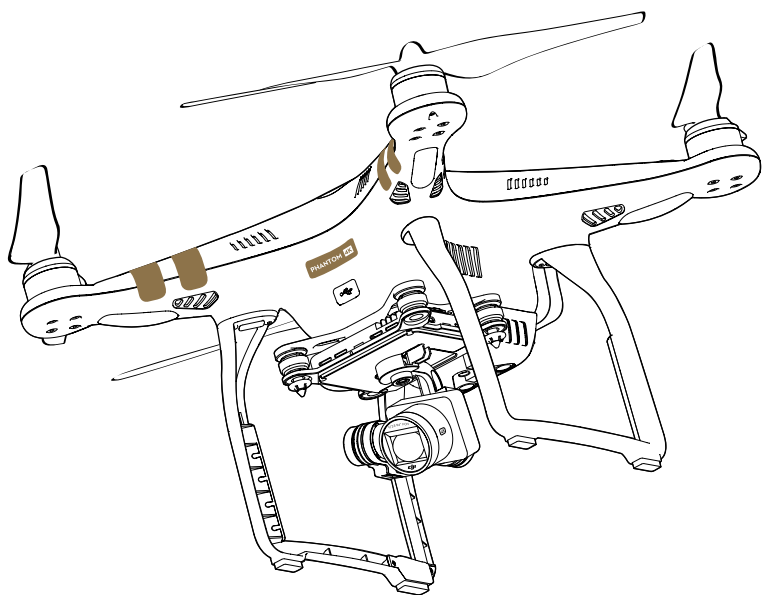


# PHANTOM 3 4K

## Quick Start Guide

V1.0

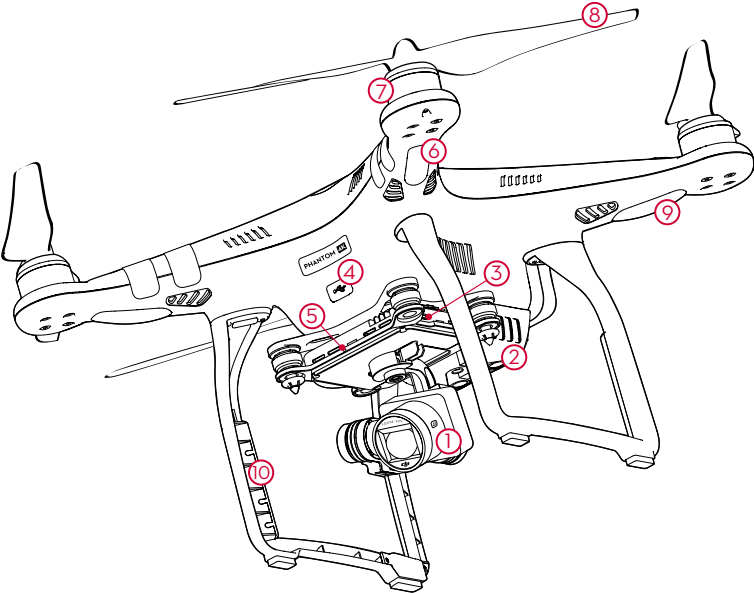


# Phantom 3 4K

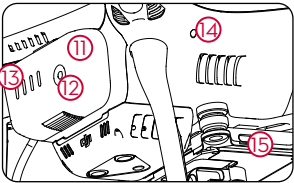
It's time to meet your Phantom 3 4K.

The Phantom 3 4K's camera records video at up to 4K and captures 12 megapixel photos.

Review the diagram below for a full list of your Phantom 3 4K's parts:



- |                              |                                |
|------------------------------|--------------------------------|
| 1. Gimbal and Camera         | 9. Aircraft Status Indicators  |
| 2. Vision Positioning System | 10. Antennas                   |
| 3. Camera Micro SD Card Slot | 11. Intelligent Flight Battery |
| 4. Aircraft Micro USB Port   | 12. Power Button               |
| 5. Camera Status Indicator   | 13. Battery Level Indicators   |
| 6. Front LEDs                | 14. Link Button                |
| 7. Motors                    | 15. Camera Micro USB Port      |
| 8. Propellers                |                                |



# Remote Controller

This powerful Remote Controller allows you to pilot and maneuver your Phantom 3 4K at distances over 3,940 feet (1.2 km)\* away, while putting selected camera controls at your fingertips.

Built into your Remote Controller is a rechargeable LiPo battery and Wi-Fi video link, which when paired with a compatible mobile device gives you a live HD view from the Phantom's camera.

1. Power Button

2. Return to Home (RTH) Button

3. Control Sticks

4. Status LED

5. Battery Level LEDs

6. Power Port

7. Mobile Device Holder

8. Small Device Positioning Tabs (such as mobile phone)

9. Antennas
10. Handle Bar

11. Gimbal Dial

12. Camera Settings Dial

13. Video Recording Button

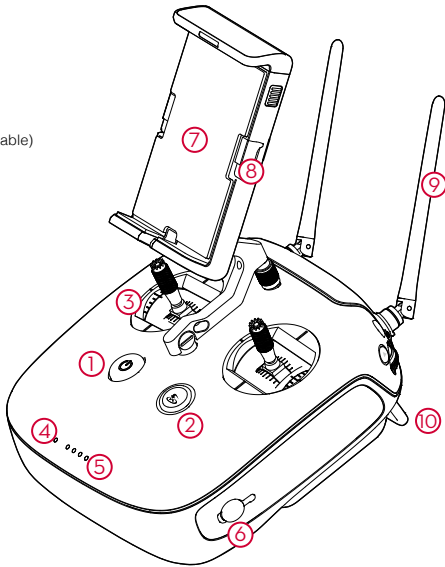
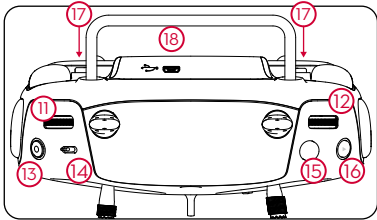
14. Flight Mode Switch

15. Shutter Button

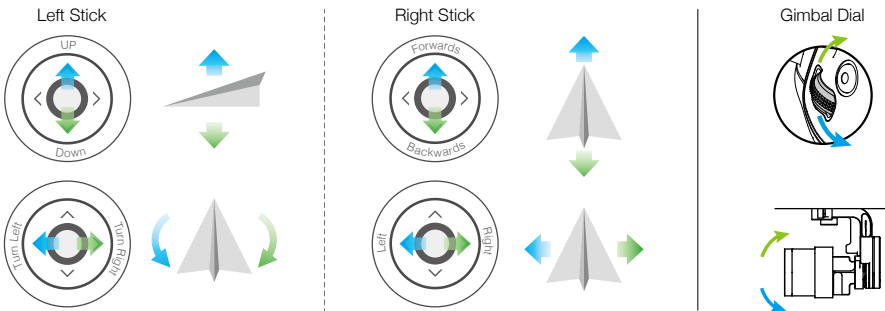
16. Playback Button

17. C1/C2 Buttons (Customizable)

18. Micro USB Port



Here are the default flight controls ( Mode 2 ). The left stick controls the aircraft's altitude and heading, while the right stick controls its forward, backward, left and right movements. The gimbal dial controls the camera's tilt.



\* In a wide open area with minimal magnetic interference, and at an altitude of about 400 feet (120 meters), the remote controller is able to reach its maximum transmission distance – FCC compliant mode at 3,940 feet (1.2 km) and CE compliant mode at 1640 feet (500 meters).

# Using Phantom 3 4K

## 1. Download the DJI GO App

Search 'DJI GO' on the App Store or Google Play and download the app to your mobile device.

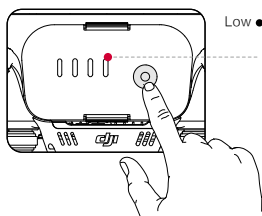


DJI GO App

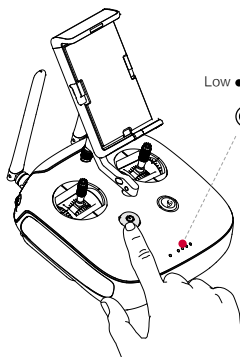


• The DJI GO app supports iOS 8.0 and Android 4.1.2, or later versions.

## 2. Check Battery Levels



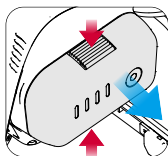
Low ● Battery Level → High



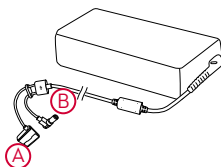
Low ● Battery Level → High

Press once to check the battery level.  
Press twice and hold to turn on/off.

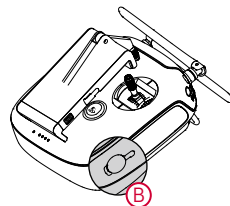
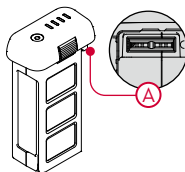
## 3. Charging the Batteries



Remove the battery.



Provided Charger  
Charge Time: ~1.5 hours



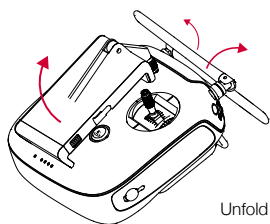
Charge Time: ~ 1.5 hours



• When charging is complete, the battery and the Status LED will automatically turn off.

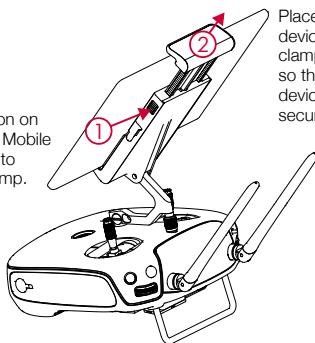


## 4. Preparing the Remote Controller



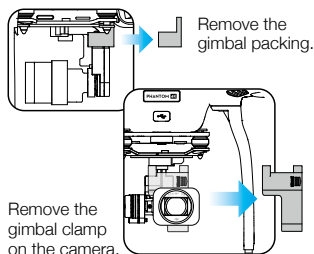
Unfold

Press the button on the side of the Mobile Device Holder to release the clamp.



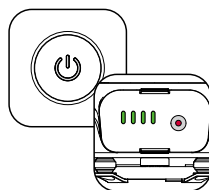
Place your mobile device into the clamp and adjust it so that the mobile device is held securely in place.

## 5. Prepare for Takeoff



Remove the gimbal packing.

Remove the gimbal clamp on the camera.



Power on the remote controller and the aircraft.



On your mobile device, select 'Phantom3\_XXXXXX' from the Wi-Fi networks and enter the default password '12341234'.



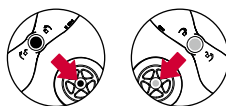
Activate your Phantom if you are using it for the first time. This requires an internet connection.



Launch the app and tap Enter Camera View, then follow the on-screen instructions.

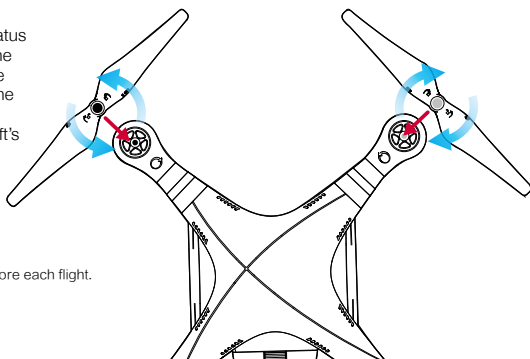


Tap the Aircraft Status Bar at the top of the screen and choose Calibrate. Follow the instructions to calibrate the aircraft's compass.



Black propeller nuts go on motors with black dots.

Silver propeller nuts go on motors without black dots.



• Tighten the propellers with both hands before each flight.

## 6. Flight

### Safe to Fly (GPS)

Before taking off, ensure the Aircraft Status Bar in the DJI GO app indicates 'Safe to Fly (GPS)'.

In the DJI GO App:



#### Auto Takeoff

The aircraft will take off and hover at an altitude of 4 feet (1.2 meters).



#### Auto Landing

The aircraft will land vertically and stop its motors.



#### Return-To-Home

Brings the aircraft back to the Home Point. Tap again to stop the procedure.



- The aircraft will not avoid obstacles while it is returning to the Home Point, and an appropriate RTH altitude **MUST** be set before flight. You should also use the control sticks to guide the aircraft. Refer to the Safety Guidelines and Disclaimer for more details.

#### Manual Takeoff



Combination Stick Command to start/stop the motors



Left stick up (slowly) to take off

#### Manual Landing



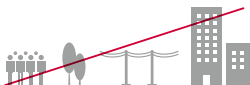
Left stick down (slowly) until you touch the ground  
Hold a few seconds to stop the motors



- Never stop the motors mid-flight, otherwise the aircraft will crash. Only stop the motors when the aircraft is on the ground or as required in emergency situations to reduce the risk of damage or injury.

## 7. Fly Safe

DJI encourages you to enjoy flying in a safe, responsible and smart way.



**DO NOT FLY** near or above people, near trees, power lines or buildings.



**DO MONITOR YOUR ALTITUDE** and fly under 400 feet (120 meters).

It is important to understand basic flight guidelines, for the safety of both you and those around you. Refer to the Safety Guidelines and Disclaimer for more information.



**DO NOT FLY** in rain, snow, fog, and wind speeds exceeding 22 mph or 10 m/s.



**DO MAINTAIN LINE OF SIGHT** and avoid flying behind buildings or obstacles that block your view.



**No Fly Zones**

More information at:  
<http://fllysafe.dji.com/no-fly>

# Specifications

## • Aircraft

|                                     |   |
|-------------------------------------|---|
| Weight (Including Battery)          | 2.82 lbs. (1280 g)  |
| Max Ascent Speed                    | 5 m/s   |
| Max Descent Speed                   | 3 m/s   |
| Max Speed                           | 16 m/s (Atti mode, no wind)   |
| Max Service Ceiling Above Sea Level | 19685 feet (6000 m) (Software altitude limit: 400 feet above takeoff point) |
| Max Flight Time                     | Approximately 25 minutes  |
| Operating Temperature Range         | 32° to 104° F (0° to 40° C)   |
| GPS                                 | GPS   |

## • Gimbal

|                    |                     |
|--------------------|---------------------|
| Controllable Range | Pitch: -90° to +30° |
|--------------------|---------------------|

## • Vision Positioning

|                       |   |
|-----------------------|---|
| Velocity Range        | <8 m/s (Altitude 2 m)                                       |
| Altitude Range        | 50 cm to 300 cm   |
| Operating Range       | 50 cm to 300 cm   |
| Operating Environment | Surface with clear pattern and adequate lighting (Lux > 15) |

## • Camera

|                              |   |
|------------------------------|---|
| Sensor                       | Sony EXMOR 1/2.3" Effective pixels:12.4 M (total pixels: 12.76 M)   |
| Lens                         | FOV (Field Of View) 94° 20 mm (35 mm format equivalent) f/2.8   |
| ISO Range                    | 100-3200 (video) 100-1600 (photo)   |
| Electronic Shutter Speed     | 8 to 1/8000 s   |
| Image Max Size               | 4000×3000   |
| Still Photography Modes      | Single shot<br>Burst shooting: 3/5/7 frames<br>Auto Exposure Bracketing (AEB): 3/5 bracketed frames at 0.7EV Bias<br>Time-lapse         |
| Video Recording Modes        | UHD: 4K (4096×2160) 24/25p; 4K (3840×2160) 24/25/30p<br>FHD: 1920×1080 24/25/30/48/50/60p<br>HD: 1280×720 24/25/30/48/50/60p<br>60 Mbps |
| Max Bitrate of Video Storage | FAT32 (≤ 32 GB); exFAT (> 32 GB)  |
| Supported File Systems       | JPEG, DNG   |
| Photo Formats                | MP4/MOV (MPEG-4 AVC/H.264)  |
| Video Formats                | Micro SD, Max capacity: 64GB. Class 10 or UHS-1 rating required   |
| Supported SD Card Types      | 32° to 104° F (0° to 40° C)   |
| Operating Temperature Range  |   |

## • Wi-Fi Video Link

|                           |   |
|---------------------------|---|
| Operating Frequency       | 2.402 GHz - 2.472 GHz   |
| Max Transmission Distance | FCC: 3940 feet (1200 m); CE: 1640 feet (500 m) (outdoors and unobstructed, aircraft's altitude at 400 feet (120 m)) |
| Transmitter Power (EIRP)  | FCC: 27 dBm; CE: 20 dBm   |

## • Remote Controller

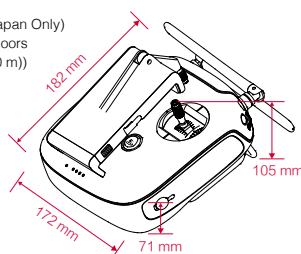
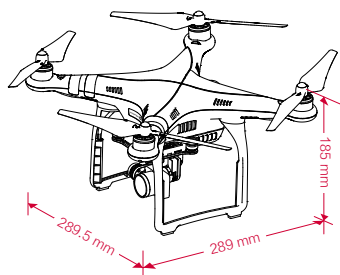
|                             |   |
|-----------------------------|---|
| Operating Frequency         | 5.725 GHz - 5.825 GHz, 922.7 MHz - 927.7 MHz (Japan Only)   |
| Max Transmission Distance   | FCC: 3940 feet (1200 m); CE: 1640 feet (500 m) (outdoors and unobstructed, aircraft's altitude at 400 feet (120 m)) |
| Operating Temperature Range | 32° to 104° F (0° to 40° C)   |
| Battery                     | 2,600 mAh LiPo 18650 2S   |
| Mobile Device Holder        | Tablets and smartphones   |
| Transmitter Power (EIRP)    | FCC: 19 dbm; CE:14 dbm  |
| Working Voltage             | 300 mA @ 7.4 V  |

## • Charger

|             |        |
|-------------|--------|
| Voltage     | 17.4 V |
| Rated Power | 57 W   |

## • Intelligent Flight Battery ( PH3-4480 mAh-15.2 V )

|                       |                               |
|-----------------------|-------------------------------|
| Capacity              | 4480 mAh                      |
| Voltage               | 15.2 V                        |
| Battery Type          | LiPo 4S                       |
| Energy                | 68 Wh                         |
| Net Weight            | 365 g                         |
| Operating Temperature | 14° to 104° F (-10° to 40° C) |
| Max Charging Power    | 100 W                         |



CE 1313 RoHS

This device complies with part 15 of the FCC Rules. Operation is subject to the following two conditions:  
(1) This device may not cause harmful interference, and  
(2) this device must accept any interference received, including interference that may cause undesired operation.

PHANTOM 3 