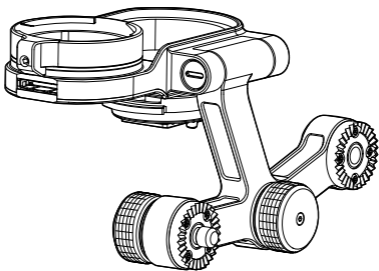


OSMO X5 Adapter

Quick Start Guide

V1.0



Disclaimer and Warning

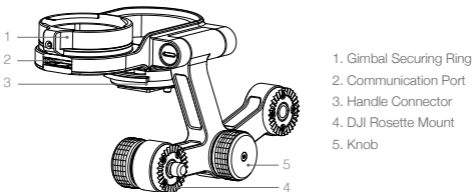
Congratulations on purchasing your new DJI product. The information in this document affects your safety and your legal rights and responsibilities. Read this entire document carefully to ensure proper configuration before use. Failure to read and follow instructions and warnings in this document may result in serious injury to yourself or others, damage to your DJI product, or damage to other objects in the vicinity. This document and all other collateral documents are subject to change at the sole discretion of DJI. For up-to-date product information, visit <http://www.dji.com> and click on the product page for this product.

By using this product, you hereby signify that you have read this disclaimer and warning carefully and that you understand and agree to abide by the terms and conditions herein. You agree that you are solely responsible for your own conduct while using this product, and for any consequences thereof. You agree to use this product only for purposes that are proper and in accordance with all applicable laws, rules, and regulations, and all terms, precautions, practices, policies and guidelines DJI has made and may make available.

DJI accepts no liability for damage, injury or any legal responsibility incurred directly or indirectly from the use of this product. The user shall observe safe and lawful practices including, but not limited to, those set forth in this document.

Introduction

The Osmo X5 Adapter allows the Zenmuse X5 Series gimbal and camera to be used with the Osmo handle. It also provides a communication port for the DJI Focus to control aperture and focus.



Specifications

Weight: 155 g

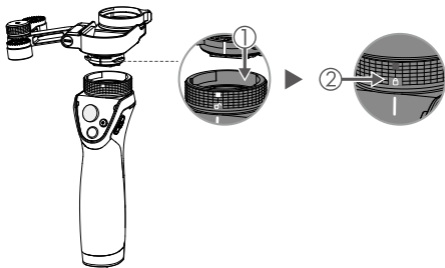
Installation

Important

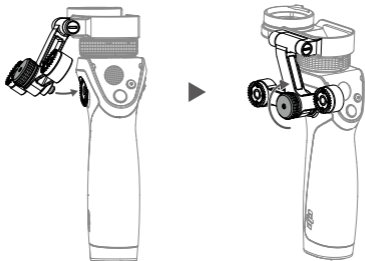
The Zenmuse X5 or X5R must be upgraded on the Osmo handle with Osmo firmware v01.01.00.10 or higher.

Mounting the X5 Adapter onto the Osmo Handle

1. Rotate the gimbal securing ring to its unlocked position.
2. Insert the X5 Adapter's handle connector into the Osmo's gimbal securing ring by aligning their respective white marks.
3. Lock the gimbal securing ring.

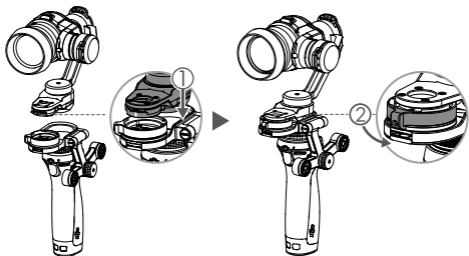


4. Screw the X5 Adapter's knob to the Rosette Mount on the side of the Osmo handle.



Mounting the Zenmuse X5 onto the X5 Adapter

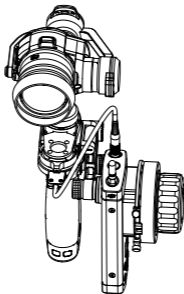
1. Rotate the X5 Adapter's gimbal securing ring to the unlocked position.
2. Mount the Zenmuse X5 gimbal and camera, making sure the pan motor sits nicely in the X5 Adapter.
3. Lock the gimbal securing ring.



Mounting the DJI Focus Remote Controller onto the X5 Adapter

1. Attach the Focus Remote Controller to one of the Rosette Mounts on the X5 Adapter and tighten the knob to secure.
2. Connect the communication ports on the Focus Remote Controller and the X5 Adapter using the DJI Focus-Osmo CAN-Bus cable.

The mounted Focus Remote Controller should look like this.



• The DJI Focus-Osmo CAN-Bus cable can be purchased on the official DJI Store. <http://store.dji.com>

This content is subject to change.

Download the latest version from
<http://www.dji.com/product/osmo>

If you have any questions about this document, please contact
DJI by sending an email to DocSupport@dji.com.