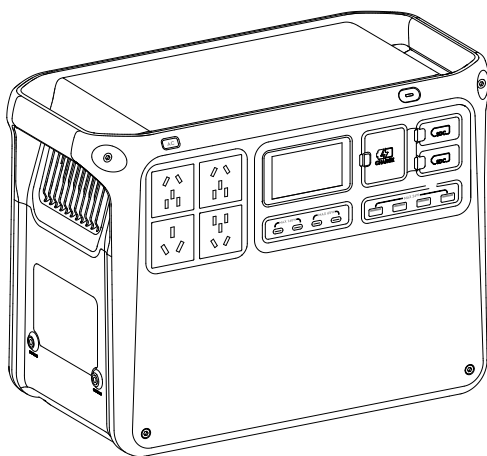


dji POWER 2000

User Manual

v1.2 2025.07





This document is copyrighted by DJI with all rights reserved. Unless otherwise authorized by DJI, you are not eligible to use or allow others to use the document or any part of the document by reproducing, transferring or selling the document. Only refer to this document and the content thereof as instructions to operate DJI products. The document should not be used for other purposes.

In the event of divergence among different versions, the English version shall prevail.

Searching for Keywords

Search for keywords such as “battery” and “install” to find a topic. If you are using Adobe Acrobat Reader to read this document, press Ctrl+F on Windows or Command+F on Mac to begin a search.

Navigating to a Topic

View a complete list of topics in the table of contents. Click on a topic to navigate to that section.

Printing this Document

This document supports high resolution printing.

Using this Manual

Legend

△ Important

💡 Hints and Tips

📖 Reference

Read Before Use

DJI™ provides you with tutorial videos and the following documents:

1. *Safety Guidelines*
2. *Quick Start Guide*
3. *User Manual*

It is recommended to watch all the tutorial videos and read the *Safety Guidelines* before using for the first time. Make sure to review the *Quick Start Guide* before using for the first time and refer to this *User Manual* for more information.

Video Tutorials

Go to the address below or scan the QR code to watch the tutorial videos, which demonstrate how to use the product safely:



<https://www.dji.com/power-2000/video>

Download DJI Assistant 2

Download DJI ASSISTANT™ 2 (Power Series) at:

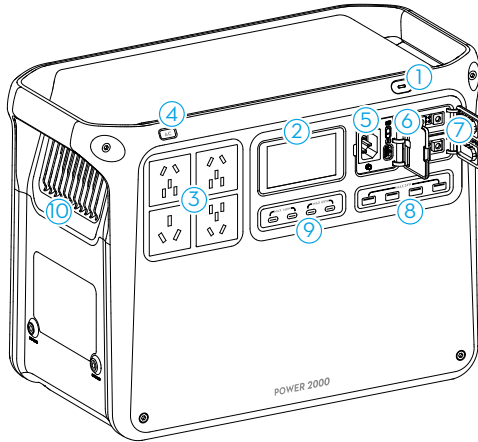
<https://www.dji.com/downloads/softwares/dji-assistant-2-power-series>

Contents

Using this Manual	3
Legend	3
Read Before Use	3
Video Tutorials	3
Download DJI Assistant 2	3
1 Product Profile	5
1.1 DJI Power 2000	5
1.2 Display Screen	6
2 Basic Usage	8
2.1 Powering on/off	8
2.2 Connecting to the DJI Home App	8
2.3 AC Recharging	8
2.4 AC Output	10
2.5 USB Output	11
3 Accessories	12
3.1 SDC Output	12
3.2 Expanding Capacity	13
3.3 Car Scenario	13
3.4 Solar Power Scenario	14
3.5 Solar Power + RV Scenario	15
4 Uninterruptible Power Supply (UPS)	16
5 Setting Up an Energy Optimization Plan	17
5.1 Scheduled Periods	17
5.2 Grid-Tied ESS	19
6 Appendix	23
6.1 Specifications	23
6.2 Compatibility	23
6.3 Firmware Update	23
Using DJI Home App	23
Using DJI Assistant 2 (Power Series)	23
6.4 Log Export	24
6.5 Maintenance	25
6.6 Disposal	25

1 Product Profile

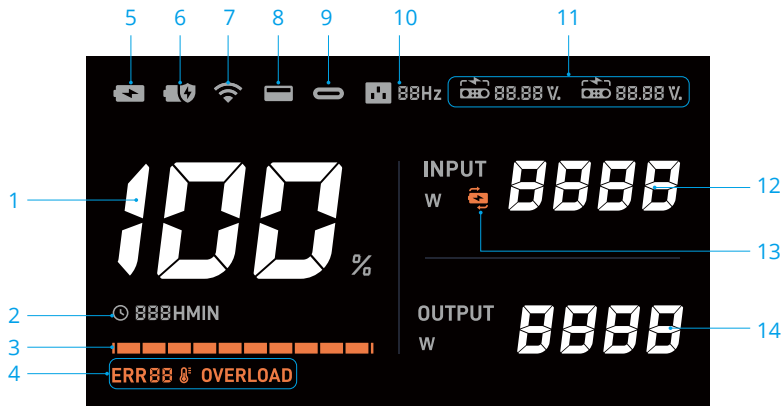
1.1 DJI Power 2000



1. Power Button
2. Display Screen
3. AC Output Ports ^[1]
4. AC Button
5. AC Input Port
6. Recharge Mode Switch
7. SDC Ports
8. USB-A Ports
9. USB-C Ports
10. Vents

[1] The illustrations in the user manual may differ from the actual product, depending on the country or region. Please refer to the actual product.

1.2 Display Screen



1. Remaining Battery Level

2. Time

Displays the remaining usage time when the power station is charging external devices.

Displays the remaining time required to fully recharge the power station from the current battery level when recharging the power station.

When the device has output and input at the same time, the display screen shows the required recharge time if the output power is larger, or the remaining usage time if the input power is larger.

3. Battery Level Bar

The battery level bar blinks in sequence when recharging the power station.


The last grid of the battery level bar blinks when the power station is charging external devices.

4. System Warnings

ERR88 : error code

8° : temperature error. The icon will be solid if the temperature is too high or too low. Wait for the temperature to return to normal.

OVERLOAD : overload warning

-
-  Check the warning prompts in DJI Home App or visit <https://s.dji.com/DJI-Power> to learn about the warning details and troubleshooting. Contact official support if the problem persists.
-

5. Fast Recharge mode

6. Standard Recharge mode

7. Wi-Fi Connection Status

Solid icon indicates a successful Wi-Fi connection.

Blinking icon indicates that the Wi-Fi is not connected or unavailable.

8. USB-A Port

9. USB-C Port

10. AC output frequency

When the AC frequency of the power station differs from the frequency of the power grid (for example, when using the device in different regions), only recharging is supported and the power station cannot charge external devices. In this case, the screen will display an error code (ERR13 or ERR14). Press and hold the AC button for more than 10 seconds to switch the frequency and resume normal use.

11. SDC Port

 : Recharging the power station or charging external devices.

88.88 V : The voltage value when using the SDC Port.

88.88 % : The battery level of the aircraft battery when charging the battery.

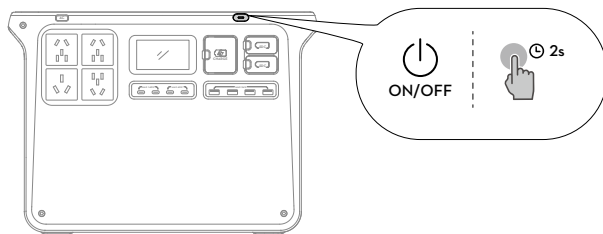
12. Input Power

13. Uninterruptible Power Supply (UPS)

14. Output Power

2 Basic Usage

2.1 Powering on/off



Power on/off: Press and hold the power button for at least two seconds.

Turn on/off the display screen: When the power station is powered on, press the power button once.

2.2 Connecting to the DJI Home App

1. Scan the QR code to download DJI Home App.



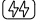
2. Enable Bluetooth and Wi-Fi on your phone, run DJI Home App and follow the instructions to connect the device.

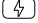


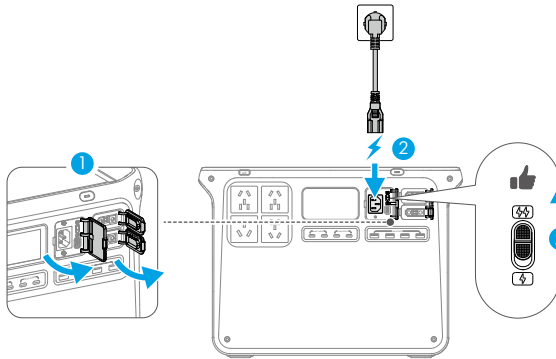
- To check the Android and iOS operating system versions supported by the app, visit <https://www.dji.com/downloads/djiapp/dji-home>.
- The interface and functions of the app may vary as the software version is updated. Actual user experience is based on the software version used.


2.3 AC Recharging



1. Open the port cover and connect the AC input port to an AC power outlet.
2. Toggle the recharge mode switch to select the recharge mode.

 **Fast Recharge mode:** The recharge power is larger and is suitable for daily recharge.

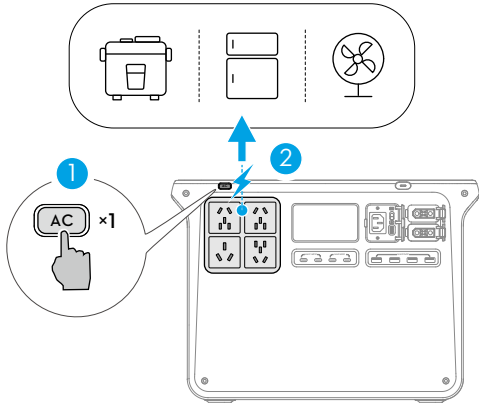
 **Standard Recharge mode:** The recharge power is smaller and the operation noise is lower, which is suitable for recharging at night.



 • **Super Recharging** can be enabled in DJI Home App. When enabled, a higher recharge power can be achieved, reducing the time required to reach the defined recharge limit.

-  • Use the original AC power cable for recharging and avoid bending or pressing the cable. Ensure good ventilation during recharging. DO NOT place the device in high-temperature or confined space.
- Disconnect the AC power outlet when charging is complete.
 - It is recommended to use Standard Recharge mode for an extended battery cell life.
 - If the power station is recharged in Fast Recharge mode for five consecutive cycles, the power station will automatically switch to Standard Recharge mode after the sixth fast recharging for battery maintenance.
 - When the temperature is abnormal in Fast Recharge mode, the temperature error icon  on the display screen blinks slowly and the actual recharge power may be lowered to ensure the battery cell life and safety.


2.4 AC Output



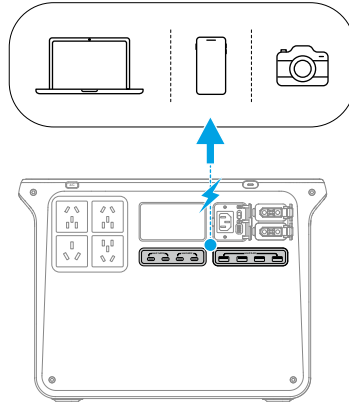
Connect the external device to an AC output port and press the AC button for AC power supply. The power station will beep once and the AC button will blink slowly.

AC output will automatically shut down if the power station is not powering any AC device for more than 30 minutes. When AC output is disabled, the power station will automatically shut down if it has no output or input for more than 60 minutes. The AC Timeout and the Device Timeout can be modified in DJI Home App.

Press and hold the AC button for a continuous AC power supply when connecting the power station to devices that operates intermittently such as a refrigerator. The power station will beep once and the AC button will show solid light.

 The internal electronic components have a waterproof coating. There may be a faint smell when using a large amount of power. The smell will dissipate naturally with daily use.

2.5 USB Output



Connect the external device to the USB-A or the USB-C ports for power supply.

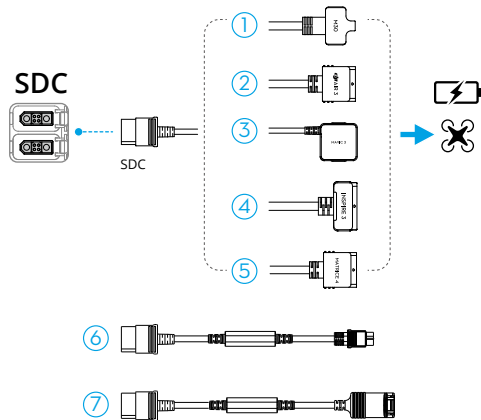
3 Accessories

💡 Watch the [tutorial videos](#) or read the [accessory manuals](#) to learn about product usage.

⚠️ Unless otherwise specified, the accessories need to be purchased separately.

3.1 SDC Output

The power station can be used with SDC cables to charge different devices via the SDC port.



- | | |
|--|---|
| 1. Matrice 30 Series Fast Charge Cable | 5. Matrice 4 Series Fast Charge Cable |
| 2. Air 3 Series Fast Charge Cable | 6. SDC to XT60 Power Cable (12 V) * |
| 3. Mavic 3 Series Fast Charge Cable | 7. SDC to Car Charger Plug Power Cable (12 V) * |
| 4. Inspire 3 Fast Charge Cable | |

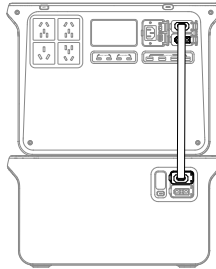
* Default output voltage: 13.6 V. Max output current: 10 A.

- ⚠️
- Make sure the external device is within the output specifications of the cable.
 - DO NOT directly connect to a lithium battery with an XT60 port using the SDC to XT60 power cable. Make sure to connect the power station to a balanced charger first.

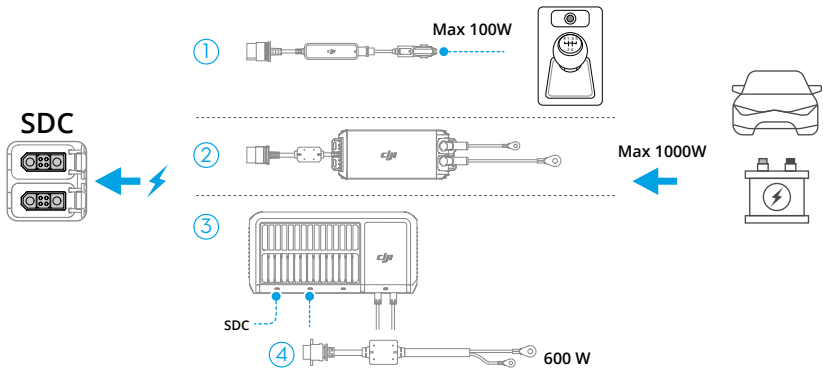
3.2 Expanding Capacity

DJI Power Expansion Battery 2000 can be connected to the power station to expand the battery capacity.

- 💡 To charge the expansion battery, connect it to the power station and charge the power station.



3.3 Car Scenario

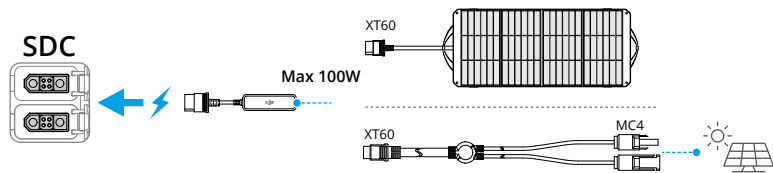


1. Car Power Outlet to SDC Power Adapter
2. 1kW Super Fast Car Charger
3. 1.8kW Solar/Car Super Fast Charger
4. 1.8kW Super Fast Charger 45A Car Charging Cable

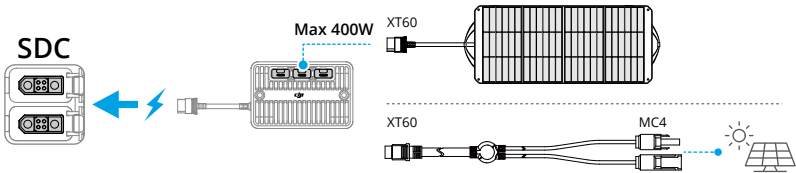
- ⚠ • Make sure the connected car power supply is within the specifications of the accessory. Otherwise, it may cause abnormal performance or even damage to the power station.
- Make sure that the power adapter is securely connected to the car power port and that the car engine is started before recharging.

3.4 Solar Power Scenario

Car Power Outlet to SDC Power Adapter

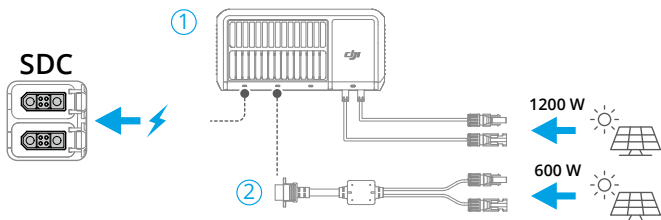


Solar Panel Adapter Module (MPPT)



💡 Use the MC4 to XT60 Cable when connecting to solar panels with MC4 ports.

1.8kW Solar/Car Super Fast Charger

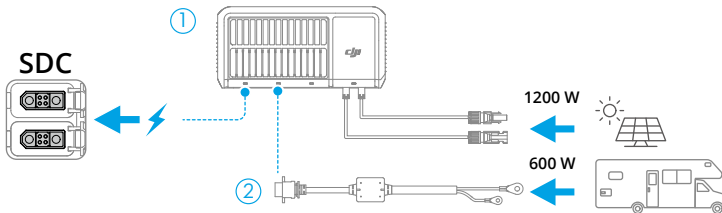


1. 1.8kW Solar/Car Super Fast Charger

2. 1.8kW Super Fast Charger XT90 to MC4 Adapter Cable

- ⚠ • It is recommended to use officially authorized solar panels. DO NOT mix different types of solar panels. Make sure the connected solar panels are within the input specifications of the adapters. Otherwise, the devices may be damaged.
- Up to three solar panels can be connected to the adapter module and used in parallel (cannot be used in series).
- The Car Power Outlet to SDC Power Cable allows one solar panel to be connected for solar recharging.


3.5 Solar Power + RV Scenario



1. 1.8 kW Solar/Car Super Fast Charger
2. 1.8kW Super Fast Charger 45A Car Charging Cable

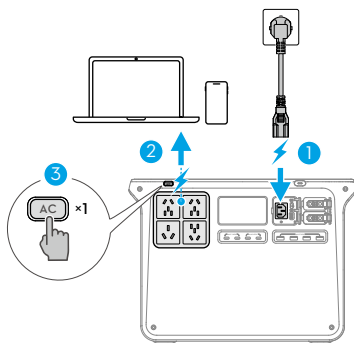
- 💡 When using multiple recharging methods simultaneously, solar recharging will take priority by default. Recharging sequence can be adjusted in DJI Home App: Tap ☰ at the upper right corner and tap **Energy Management**, enable **Custom Backup Reserve Level** and modify the **Backup Reserve Level**. When the battery level is below the backup reserve level, multiple recharging methods can be used simultaneously. When the current battery level is above the backup reserve level, only solar recharging is available.

4 Uninterruptible Power Supply (UPS)

Connect the power station to an AC power outlet, and connect an external device such as a computer to the power station. Press the AC button once, UPS is enabled if  appears on the display screen.

When the power grid is normal, the AC power outlet powers both the power station and the connected device.

In case of a sudden power outage, the power station can automatically switch to power supply status, ensuring that the connected device remains in normal operation.




- The power station only supports the basic UPS feature and does not support 0ms switching. DO NOT connect the power station to devices that require 0ms UPS, such as a medical equipment. Otherwise, it may cause the device to malfunction.
- This function is unavailable in some regions. Refer to local laws and regulations for more information.
- Due to restrictions by local laws and regulations in some countries and regions, the actual output power of the power station may be lowered in UPS mode.

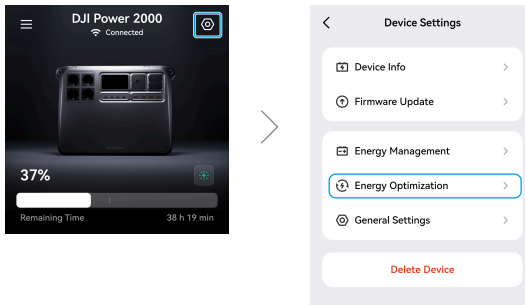
5 Setting Up an Energy Optimization Plan

The Energy Optimization function in DJI Home App allows you to manage the charging and discharging plan of the power station, helping to reduce electricity costs.

5.1 Scheduled Periods

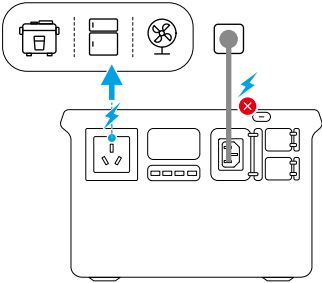
When enabled, the power station will automatically charge and discharge according to the set peak and off-peak electricity rate periods.

1. Turn on the power station and ensure that it is connected to DJI Home App.
2. Make sure the power station and the mobile phone is connected to Wi-Fi. Update the device firmware to the latest version.
3. Run DJI Home App, tap  at the top-right corner, and tap **Energy Optimization > Scheduled Periods**.

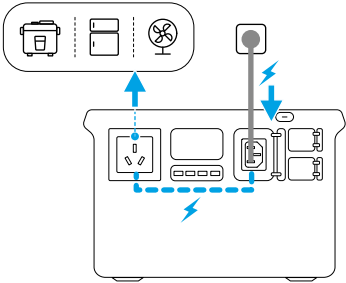


4. Set the peak and off-peak electricity rate periods. During peak periods, the power station supplies power to connected appliances; while in off-peak periods, the power station will be charged.

Peak Electricity Rate Periods



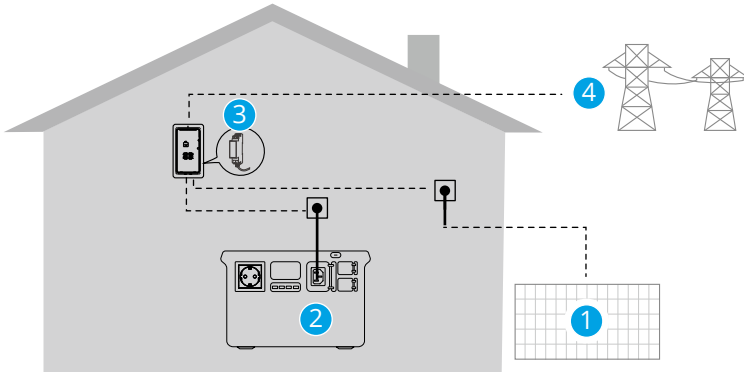
Off-Peak Electricity Rate Periods



5.2 Grid-Tied ESS

A solar power system is required to use the Grid-Tied ESS function. The power station can be connected to the grid to maximize the use of solar energy and reduce electricity costs.

Grid-Tied functions are only supported in some countries and regions. Visit the link for more details <https://www.dji.com/power-2000/faq>.

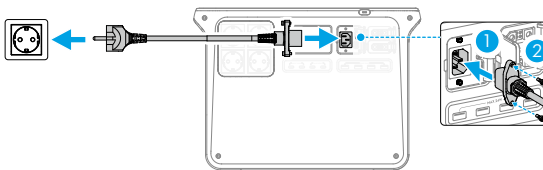


1. Solar Power System
2. Power Station
3. Smart Meter
4. Power Grid

Getting Started

1. Connect the power station to a wall socket and tighten the screws on the AC input port.


⚠ • DO NOT connect to extension cords or sockets with aging wiring.

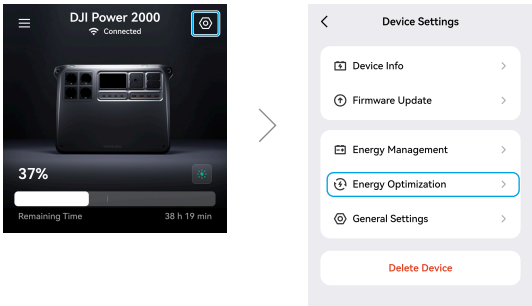


2. Install a smart meter (optional).

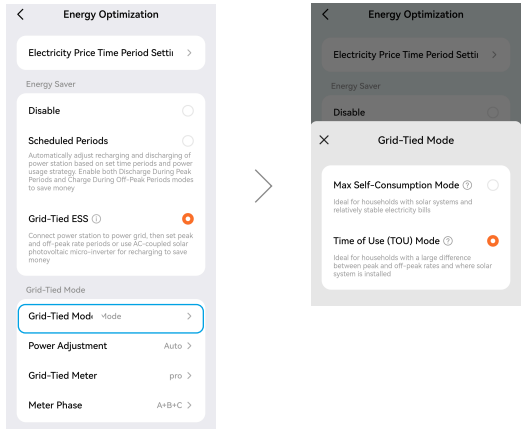
- ☀️ • Visit the link to view supported smart meter models <https://www.dji.com/power-2000/faq>.
 - Refer to the smart meter manuals to learn about safe installation and usage. Installations should be completed by a qualified electrician.
 - It is recommended to consult the electrician or power company to determine the actual operating meter phase for further settings in the app.
3. Before using the grid-tied function, make sure to submit a power grid connection request in compliance with local laws and regulations. The requirements and procedures may vary by country and region. Consult your local power company for more details.

Grid-Tied Settings

1. Turn on the power station and ensure that it is connected to DJI Home App.
2. Make sure the power station and the mobile phone is connected to Wi-Fi. Update the device firmware to the latest version.
3. Run DJI Home App, tap  at the top-right corner, and tap **Energy Optimization > Grid-Tied ESS**.



4. Select the grid-tied mode:



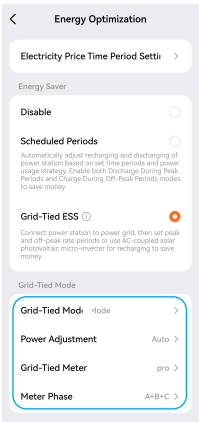
Electricity Prices	Smart Meter	Recommended Settings
With peak and off-peak difference	No	Time of Use (TOU) Mode Power Adjustment: Manual
	Yes	Time of Use (TOU) Mode Power Adjustment: Auto
No peak or off-peak difference	Yes	Max Self-Consumption Mode

* Select Scheduled Periods if no solar power system is installed.

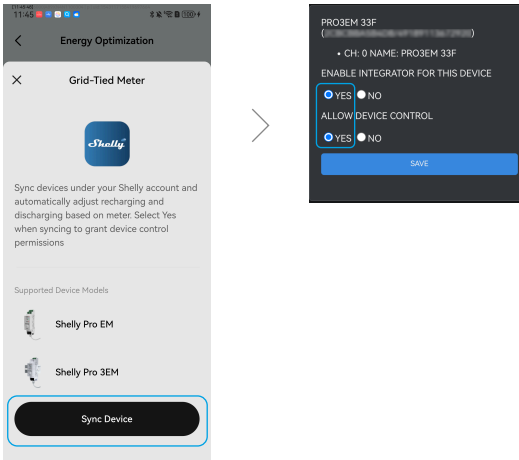
Both **max self-consumption** and **TOU** will adjust the charging and discharging of the power station based on household electricity usage. The electricity from the solar power system or the power station will be used in priority to reduce grid consumption and electricity costs.


Compared to **max self-consumption**, **TOU** mode further optimizes power usage based on the electricity price schedules. The power station charges with surplus solar power during the day and low-cost grid power during off-peak periods, then supplies stored energy to household appliances during peak periods to reduce grid consumption and save on electricity costs.

5. Complete the settings following the instructions in DJI Home App.



6. Sync the smart meter to the app and refer to the illustration for check box selection.



- 
- When grid-tied, the output power of the power station will be 800 W and the max charging power will be 2200 W.
 - UPS function still can be used in grid-tied mode. Just make sure that the total power consumption of devices connected to the AC output port of the power station does not exceed 1200 W, otherwise it may affect grid-tied performance.
 - When you need to disconnect the power station from the grid for outdoor or vehicle use, it is recommended to disable the energy optimization settings for stable power output.

6 Appendix

6.1 Specifications

Visit the following website for specifications.

<https://www.dji.com/power-2000/specs>

6.2 Compatibility

Visit the following website to get the information on compatible products.

<https://www.dji.com/power-2000/faq>

6.3 Firmware Update

Using DJI Home App

If the device is connected to DJI Home App, a prompt will appear in the app when new firmware is available. Follow the instructions in the app to update the firmware. An internet connection is required during the firmware update.

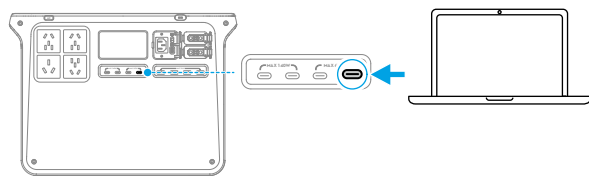
You can also update the firmware in DJI Home App: tap ⓘ at the top right corner, and tap **Firmware Update > Update**.

-
- ⚠ • Before updating, make sure the device has enough battery level and stable network connection.
 - Connect the accessories such as an expansion battery or a super fast charger to the power station to update the firmware together.
-

Using DJI Assistant 2 (Power Series)

Make sure that the computer is connected to the internet before the firmware update. Follow the instructions below to ensure a successful firmware update:

1. Power off the device, press and hold the AC button and the power button simultaneously, until the USB-C icon starts to blink on the display screen.
2. Connect the computer to the designated USB-C port as shown in the figure.



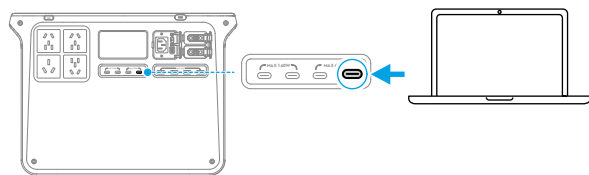
3. Launch DJI Assistant 2, select the product, and click the firmware update button on the left side.
4. Select the firmware version, carefully read the prompts in DJI Assistant 2, and click update. The firmware will be downloaded and uploaded to the device automatically.
5. The firmware will be updated automatically, and the display screen will show the update progress. Wait for processing to complete. The device will restart automatically after the firmware update is done.



- DO NOT power off the device or disconnect the device from the computer during a firmware update.
- If the firmware update fails, the display screen will show UPGD FAIL. Disconnect the device from the computer and the AC power outlet, press and hold the power button for five seconds to power off the device, and try again.

6.4 Log Export

1. Power off the device, press and hold the AC button and the power button simultaneously, until the USB-C icon starts to blink on the display screen.
2. Connect the computer to the designated USB-C port as shown in the figure.



3. Run DJI Assistant 2, click **Log Export** on the left side, select the log from the log list and save. Wait for the export to complete.
4. Restart the power station to resume normal use after completing log export.

6.5 Maintenance

1. If the power station needs to be stored for an extended period, it is recommended to discharge the power station to 60%. Storing with a high power level will shorten the battery cell life.
2. The power station should be stored in a cool and dry environment without direct sunlight at the specified storage temperature. DO NOT place the power station in water or where water may leak.
3. DO NOT store the power station for an extended period after fully discharging. Otherwise, the battery may over-discharge and cause irreparable damage to the battery cell.
4. Charge and discharge the power station once every 6 months to ensure the battery performance: discharge the power station to below 15%, power off for more than two hours, and then charge it to 100% in Standard Recharge mode.
5. Clean the ports with a clean, dry cloth if there is any noticeable build up. DO NOT clean the power station with alcohol or other flammable solvents.

6.6 Disposal

1. The power station contains hazardous chemicals, make sure to strictly follow local regulations regarding the disposal and recycling of batteries. DO NOT dispose of the power station in a regular waste disposal container.
2. Dispose of the power station in a suitable recycling container only after fully discharging it.
3. Power stations that are over-discharged, swollen, involved in a crash, come into contact with liquid, damaged, or leaky must be disposed of properly. DO NOT use any power station in such a condition in order to avoid damage or injury. Contact a professional battery disposal or recycling agent for further assistance.



Contact

DJI SUPPORT

This content is subject to change without notice.

Download the latest version from



<https://www.dji.com/power-2000/downloads>

If you have any questions about this document, please contact DJI by sending a message to **DocSupport@dji.com**.

DJI is a trademark of DJI.

Copyright © 2025 DJI All Rights Reserved.